

## Why Focus on Trees?

Trees are a practical, low-cost common-sense way to save energy for homes and other buildings. According to the US Department of Energy, proper placement of just three trees **will save an average household between \$100-\$250 in energy costs per year.**

The larger the tree at maturity, the greater the energy savings for the homeowner. When space allows, choose a large-sized shade tree rather than an ornamental tree species.

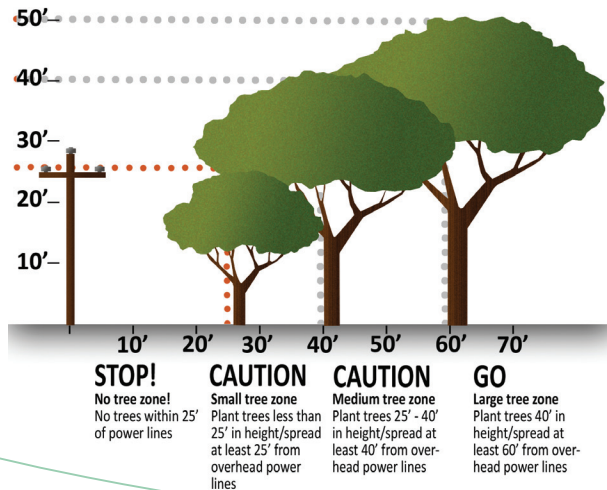
## Tree and Utility Line Conflicts

Three different zones of tree planting to consider:

**Zone 1** – Directly under utility lines to 20 feet from overhead utility lines: **Use 25' maximum tree height (ornamental trees)**

**Zone 2** – From 20-50 ft. from overhead utility line: **Use 35' max. tree height (medium trees)**

**Zone 3** – 50 ft. and beyond from overhead utility: **No height restrictions on trees (large shade trees)**



## 5 Recommended Large Shade Trees



Kentucky Coffee Tree

- Kentucky Coffee Tree
- London Planetree
- Hackberry
- Thornless Honey Locust
- Swamp White Oak

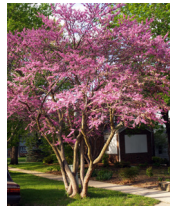
## 5 Recommended Medium Trees



Ironwood

- American Hornbeam (Blue Beech)
- Ohio Buckeye
- Ironwood (Hophornbeam)
- Amur Cherry
- Little Leaf Linden

## 5 Recommended Small Trees



Eastern Redbud

- Eastern Redbud
- Serviceberry (various cultivars)
- Paw Paw
- Pagoda Dogwood
- Thornless Cockspur Hawthorn

## 5 Recommended Conifers for Windbreaks (Large Trees)



Eastern White Pine

- White Fir (Concolor Fir)
- Norway Spruce
- Black Hills Spruce
- Eastern White Pine
- Eastern Arborvitae

# Your Roadmap for Selecting and Planting Trees

## A Guide for Homeowners

# Your Roadmap to Successful Tree Plantings

## Start Here

Do your research. Fill out this sheet and take it with you to buy a tree.

1

### Where I want to plant a tree

#### For shade for cooling:

- 15-60 feet from west side of home
- 15-60 feet from east side of home
- 15-25 feet from south side of home

#### For winter windbreaks:

- Evergreens on N and W sides of home

2

### Site selection - any conflicts?

- \_\_\_ Overhead or underground utilities/easements?
- \_\_\_ Any local requirements/regulations on tree planting?
- \_\_\_ Should be 3 feet from pavement or fencing
- \_\_\_ Should be 15 feet from buildings or other trees
- \_\_\_ Mature fall distance
- \_\_\_ Will it block sight of traffic?
- \_\_\_ Neighbors

3

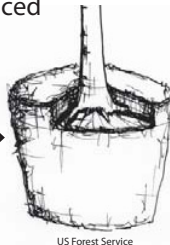
### Consider site condition

- \_\_\_ Soil type: clay, loam, sandy?
- \_\_\_ Moisture: is it wet, dry, medium?
- \_\_\_ Soil pH \_\_\_\_\_
- \_\_\_ Exposure: sunlight, partial shade, shade?

6

### Look when buying a tree

- \_\_\_ Good form: single leader, evenly spaced branches
- \_\_\_ Are there dead branches? Trunk or branch injuries?
- \_\_\_ Circling roots? Buried root flare? →
- \_\_\_ Graft union decay?
- \_\_\_ Is there a guarantee or conditions on that guarantee?



5

### What kind of nursery stock?

#### Bare root (spring plantings)

- Less expensive
- Root problems are visible

#### Containerized

- Available and easy to handle
- Watch for circling roots

#### Balled & Burlapped (B&B)

- Can plant larger trees
- Very heavy

4

### Species selection

- \_\_\_ Is the species suited to site conditions (see No. 3)?
- \_\_\_ Will it fit in the available space?
- \_\_\_ Mature shape, e.g., oval, vase, pyramidal, columnar, etc. ?
- \_\_\_ Disease resistance?
- \_\_\_ Growing zone \_\_\_\_\_
- \_\_\_ Leaves/seeds/nuts/limbs or messiness?
- \_\_\_ DIVERSITY - What species are in your community/ neighborhood?

7

### Site preparation

At least 48 hours before you dig:

Call Iowa One Call, 811



8

### Planting

- \_\_\_ Edge of planting hole should be **18 inches from buried utility line/easement**
- \_\_\_ Hole is 2-3 times size of root ball
- \_\_\_ Cut any circling roots →
- \_\_\_ Expose root flare
- \_\_\_ Only prune dead, diseased branches
- \_\_\_ Mulch, 2-4 inches
- \_\_\_ Stake if in exposed site



9

### Caring for your new tree

- \_\_\_ Water if not 1 inch of rain per week. Slowly trickle water over root ball area for 1-2 hours once/week
- \_\_\_ Keep mulched and weeded
- \_\_\_ Protect trunk during winter
- \_\_\_ Remove stakes after first year
- \_\_\_ Prevent mower and weed wacker damage



Linn County  
Rural Electric  
Cooperative



TREES FOREVER  
Planting a better tomorrow™



10

**Congratulations!**

You are now an informed tree owner!

For more information: [www.treesforever.org](http://www.treesforever.org)